



SANIACCESS® 2

Designed to provide easy access for toilet with vanity applications. Convenient access panels allow you to service and maintain the macerator without having to remove it.

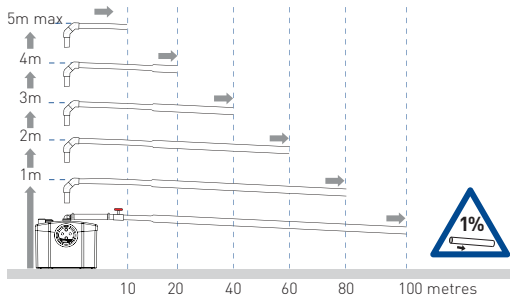


WHY CHOOSE THIS PRODUCT?

- Easy service access
- Suitable for one toilet and hand basin
- Easy maintenance without removal of unit
- Macerator needs minimum 4.5 L of unrestricted flush for optimal function
- Quiet technology
- Ideal for adding an additional toilet or powder room anywhere

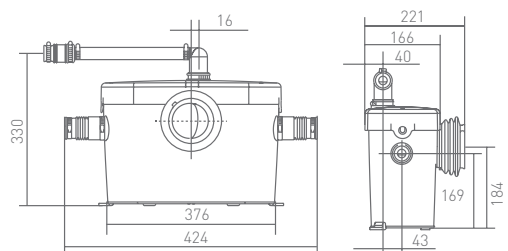
VERTICAL/HORIZONTAL PERFORMANCE

Increase size of horizontal run by one pipe size after 5m. All horizontal pipework requires a minimum of 1:100 fall.

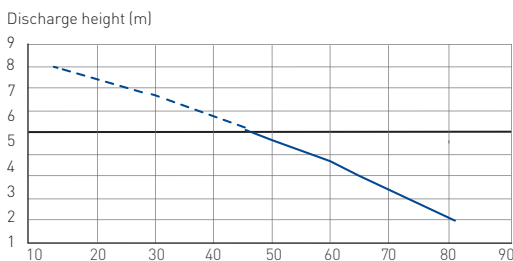


TECHNICAL CHARACTERISTICS

Discharge Pipework	20 mm
Motor Power	400 Watts
Voltages	220-240 V/50 Hz
Working Waste Water Temp	35°C
Product Weight	5.8 kg
Overall Measurements	424 x 330 x 166 mm
Inlet Pipework	40 mm
IP Rating	IP44



FLOW RATE PERFORMANCE CHART



APPLICATIONS



ATS 5200.101
Certificate No. 23048
Manufacturer: SFA
Brand: Saniflo

Product Reference:
SA80



Double access:

- A Direct access to the blade if maintenance is required
- B Direct access to electric components

Made in France to the highest standards, needs to be installed by a licensed plumber