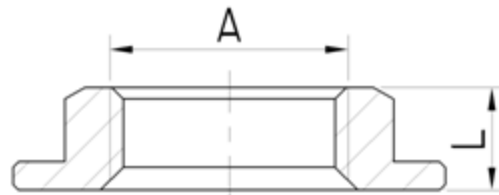


BACK NUT FLANGED

Brand Name: **elson**



CODE	DESCRIPTION	L(mm)	A
80379	BACK NUT FLANGED 15mm CHROME	9	G1/2
80380	FLANGED BACK NUT 15mm	9	G1/2
80382	FLANGED BACK NUT 20mm	9.3	G3/4
80384	BACK NUT FLANGED 25mm BRASS	10	G1
80386	BACK NUT FLANGED 32mm BRASS	13	G1 1/4
80388	BACK NUT FLANGED 40mm BRASS	13	G1 1/2
80390	BACK NUT FLANGED 50mm BRASS	13	G2

Product Specification & Features

- Maximum Working Temperature: 95°C
- Maximum Working Pressure at 20°C : Water-2000Kpa, Gas-500KPa
- Threads: Complies with AS ISO 7.1, AS ISO 7.2 and AS 1722.2
- Material: DR Brass, Complies with AS 2345
- Suitable for Potable Water – complies with AS/NZS 4020



Elson Australasia Pty Ltd

Tel: 02 9625 7899 Fax: 02 9625 7855

Website: www.elson.net.au E-mail: sales@elson.net.au

Version 1.0

Nov. 2020